

Update

21 February 2025

**Salmon Monitoring Program
IFI 2023**

**Please click on image for full
report**

Salmon monitoring programmes 2023 funded
under the Salmon and Sea Trout Rehabilitation,
Conservation and Protection Fund

IFI2023/1-1743

Next update

**BIM Report on Aquaculture
2024**

**Annual
Aquaculture Report**

Findings of the National Seafood Survey 2024

BIM
Biodiversity
Innovation
Marine
Agency

**Is Climate catching up
with open cage salmon
farming?**

Salmon Watch Ireland

Inland Fisheries Ireland Electro Fishing Report 2023- Atlantic salmon

The above-mentioned report was published recently by Inland Fisheries Ireland and is a comprehensive analysis of the program carried out in 2023.

This program is concerned with catchment wide electro fishing, estimation of smolt to adult return survival rates and a study of life cycle characteristics in several catchments.

The report is extensive and complex and is strongly indicative of trends evident in salmon populations countrywide.



In 2023 thirty-five catchments or sub-catchments were surveyed with over seven hundred sites visited. In total since 2007 the number of catchments surveyed stands at six hundred and thirty-one with over thirteen thousand sites surveyed. This large data set allows for comparison among years and over a long period (16 years).

Pages 119-122 are of great interest as they outline the surveys carried out over the sixteen-year program and is generally reflective of a declining resource.

Please support Salmon Watch Ireland

If you wish to become a supporter of Salmon Watch Ireland, you can do so by several methods online or by standing order mandate.

[Donation](#)

[Supporters](#)

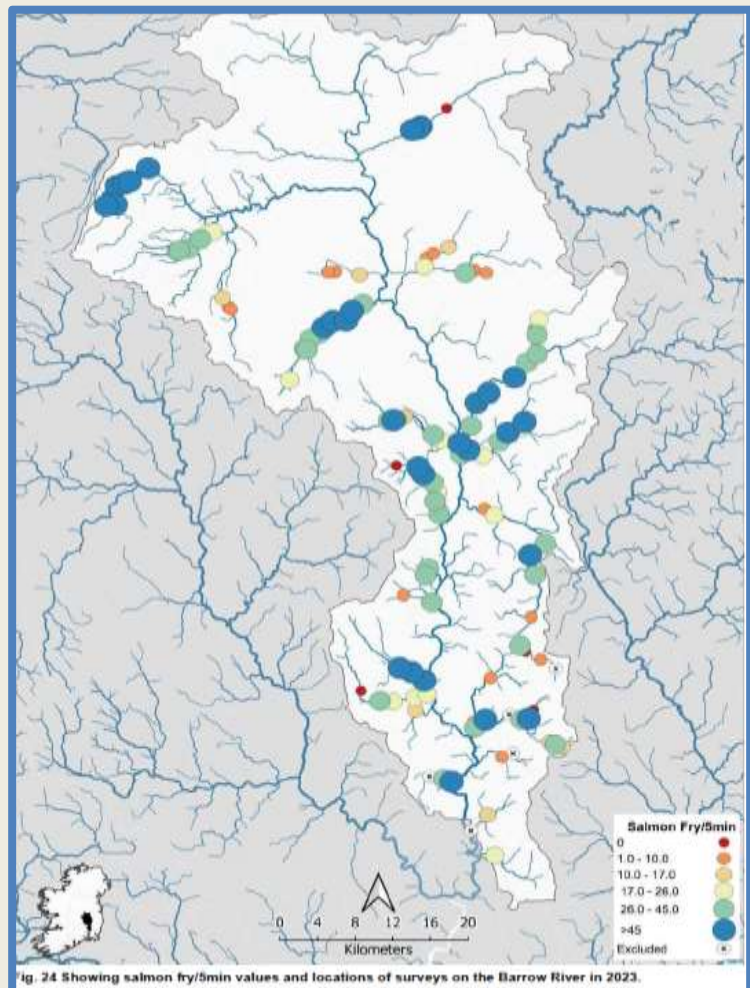
[Standing order](#)

Please present at your bank branch and notify Salmon Watch Ireland. Standing orders may also be set up on your own online banking portal.

[By mail or credit transfer to Salmon Watch Ireland](#)



However, there are positive indicators in certain catchments but overall, there appears to be a significant decline evident in many catchments.



River Barrow 2023 – Inland Fisheries Ireland

It is worth noting that the salmon fry index is indicative of how successful salmon spawning was in the previous winter.

The smolt to adult survival rates are interesting with a significant decline noted in salmon at sea in 2020 and 2021 with only 1.5% survival back to the Erriff. There appears to be a higher return for salmon at sea in 2022 to the Erriff.

Please read the report and comment on your particular river. The maps associated with each catchment demonstrate where densities are lowest, and localised knowledge may help to ascertain the factors involved.